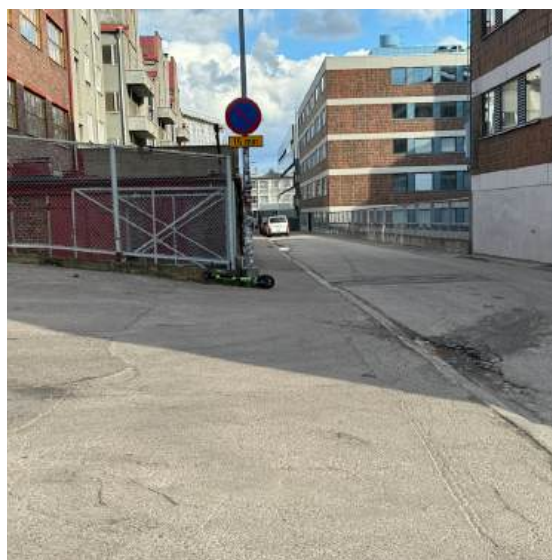


# ***Accessibility Information for Ääniwalli***

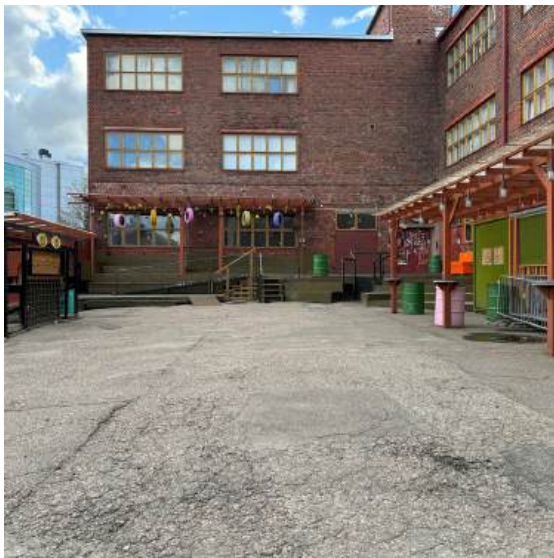
## ***Escorted transport***

On Pälkäneentie there is a drop-off point 30 meters from the accessible entrance. The surface is uneven asphalt. From the drop-off point, the route curves uphill to the left toward the accessible entrance. The ramp is located to the left of the entrance. If needed, you may drive to the top of the hill, from where it is about 20 meters to the door.



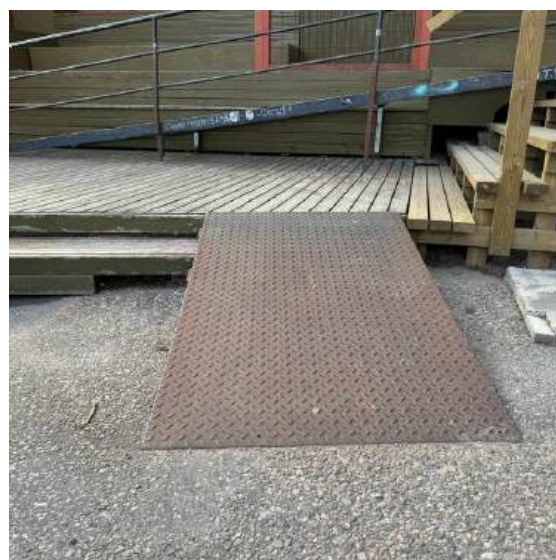
## ***Route to the Main Entrance***

Before the main entrance, there are two consecutive ramps. The first ramp is on the left side of the stairs to the main entrance. The ramp is short and has a slope of 9,5 deg with no handrail. After the ramp, there is a wooden-surfaced platform. The second ramp leads to the main entrance and has a slope of 9,5 deg. There is a handrail on the right side. The ramp has a metal surface and is 90 cm wide. The ramp is slightly tilted, and there is a gentle threshold at the top of the ramp. After the ramp, there is a slightly sloped surface with a metallic finish. If you need assistance with ramps, please ask the security personnel or Pride volunteers for help.





## ***Route to the Main Entrance***

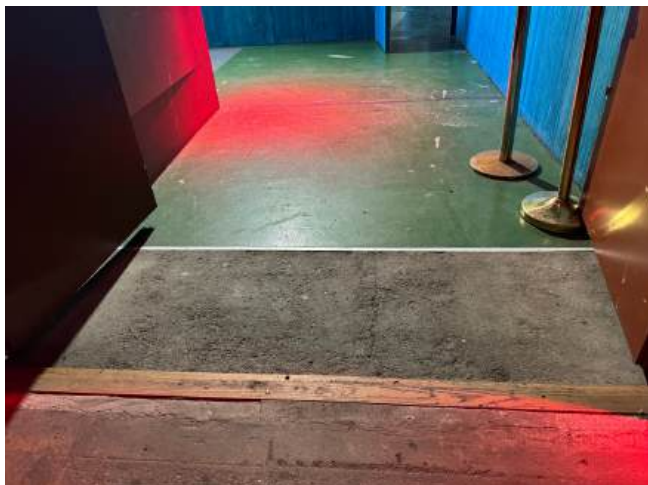


## ***Main Entrance***

The first door is double-leafed, and during the event, Ääniwalli staff or Helsinki Pride volunteers will assist with opening doors. The threshold at the entrance is 2 cm high.



After the first door, there is another door with two leaves and a small threshold. Both doors remain open throughout the event.

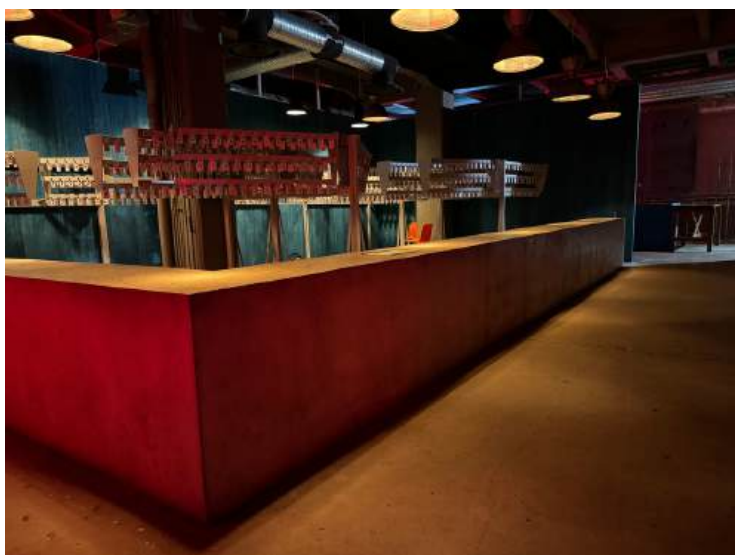


## ***Main Entrance***

This is followed by one more door, also with a small threshold.



The cloakroom is located directly after the third door and is accessible. It is staffed.

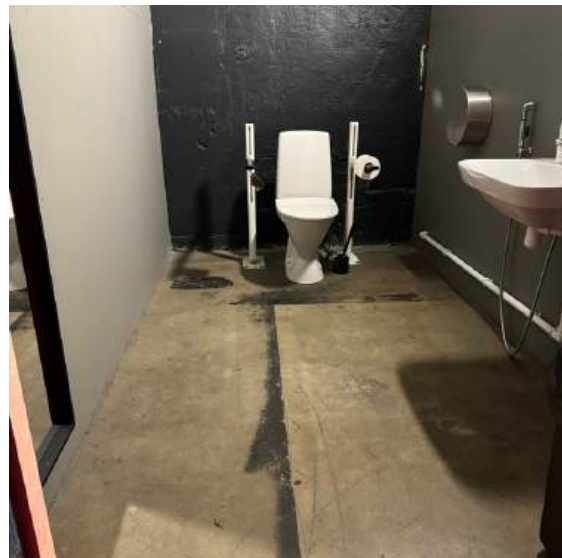
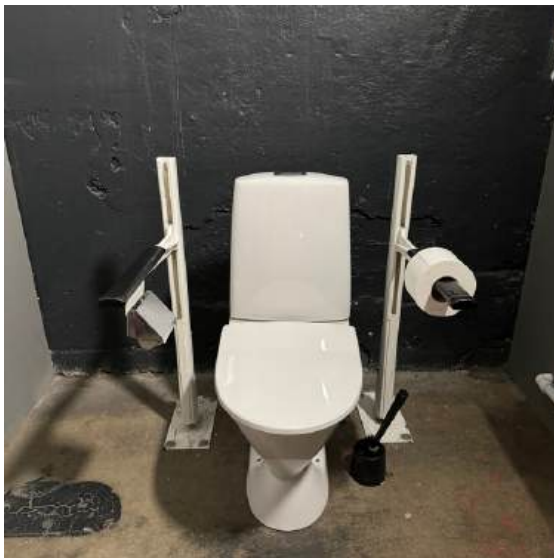


HELSINKI  
**Pride**  
NAISTEN-  
**Bileet**



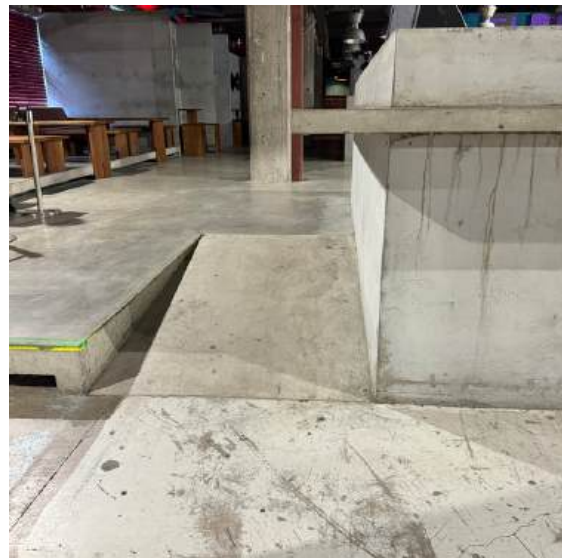
## ***Accessible Toilet***

There is one accessible toilet, located to the left behind the cloakroom. The route is fully accessible. A separate key is required, which can be requested from the cloakroom. The doorway is wide enough for mobility aids. The toilet door does not have a handrail. There are support rails on both sides of the toilet seat.



## ***Main Hall***

The main hall has level differences and individual steps. Caution is advised to avoid accidents. The floor is concrete. The audience area is accessible. The bar counter is reachable from the audience area via two ramps located on the left and right sides of the hall.



## ***Small Hall***

The small hall is accessible, and the route to it is barrier-free. The bar counter is located in the same space as the stage. The small hall is on the same level as the main hall, and moving between the two spaces is barrier-free.



## ***General***

The event takes place in Ääniwalli's main and small halls, both located on the same floor. The spaces are dimly lit. Assistants and interpreters are admitted free of charge. If you need more information about accessibility, you can contact [salla@pride.fi](mailto:salla@pride.fi).

***Accessibility information compiled by  
Riikka Kampara.***